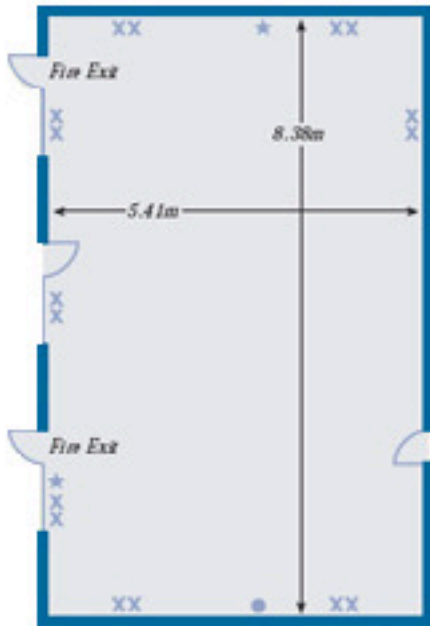




HATTON COURT

THE COTSWOLDS

The Severn Room



Dimensions

Length: 7m (22' 11")

Width: 5.41m (17' 9")

Height: 2.28m (7' 6")

Area: 37.94m² (40' 8")

Capacities

Boardroom: 20 U-shape: 20

Technical Information

Air conditioning

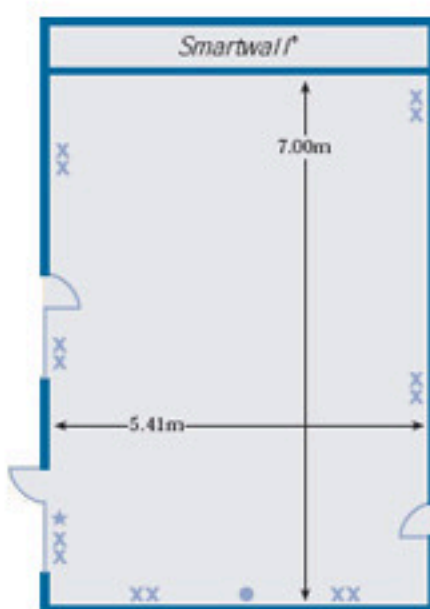
Power sockets: 14x13amp (1 aerial)

Telephone sockets: 1 Direct access to outside

Maximum door size: 1.98x0.76m

Natural daylight to room

The Malvern Room



Dimensions

Length: 8.38m (27' 6")

Width: 5.41m (17' 9")

Height: 2.28m (7' 6")

Area: 45.35m² (48' 8")

Capacities

Theatre Style:

50 Boardroom: 24

U-shape: 20

Classroom: 24